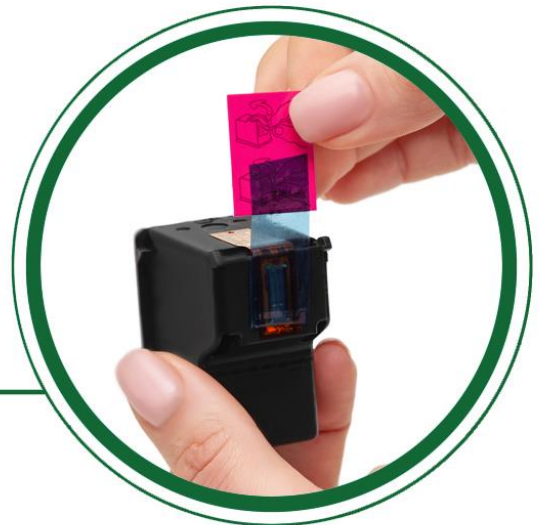


How to install



Step 1: Remove the plastic protective cap from the ink cartridge.



Step 2: Use the pink pull tab to remove the protective tape.



Step 3: Install the cartridge into the corresponding slot and push forward until it firmly locks into place.

Attention:

do not touch the chip or the ink nozzles.





The first time you use this product

1 Please be noticed the reusable print head and one of the ink cartridges have been assembled together.

2 Install the ink cartridge with print head into the printer.



The second/third time you use this product



1 Remove the cartridge from the printer when it used up.

Be careful not to touch the contacts or nozzle.

2 Detach the reusable print head from the cartridge and place it aside.



3 Take out the cover of new cartridge and reassemble the reusable print head and new cartridge together.



4 After the reassembling, wipe the nozzle with tissue for 1-2 times.



5 Install the new ink cartridge with print head into the printer.

